

# Technical data sheet



## Product features

### Freezing cabinet 700 l GN 2/1, stainless steel

<b>Model</b>	<b>SAP Code</b>	00006115
--------------	-----------------	----------



- GN / EN size in device: GN 2/1
- Chamber volume [l]: 700
- Minimum device temperature [°C]: -18
- Maximum device temperature [°C]: -22
- Insulation thickness [mm]: 60
- Control type: Digital
- Opening of device: Hinges on the left
- Automatic defrost: Yes
- Annual energy consumption [kWh]: 2435

<b>SAP Code</b>	00006115	<b>Gross Volume [m3]</b>	1.279
<b>Net Width [mm]</b>	693	<b>Net Volume [m3]</b>	1.149
<b>Net Depth [mm]</b>	826	<b>Number of GN / EN</b>	3
<b>Net Height [mm]</b>	2008	<b>GN / EN size in device</b>	GN 2/1
<b>Net Weight [kg]</b>	118.00	<b>Minimum device temperature [°C]</b>	-18
<b>Power electric [kW]</b>	0.879	<b>Maximum device temperature [°C]</b>	-22
<b>Loading</b>	230 V / 1N - 50 Hz	<b>Refrigerant</b>	R290
<b>Energy class</b>	D	<b>Climate class</b>	4
<b>Chamber volume [l]</b>	700		

# Technical data sheet



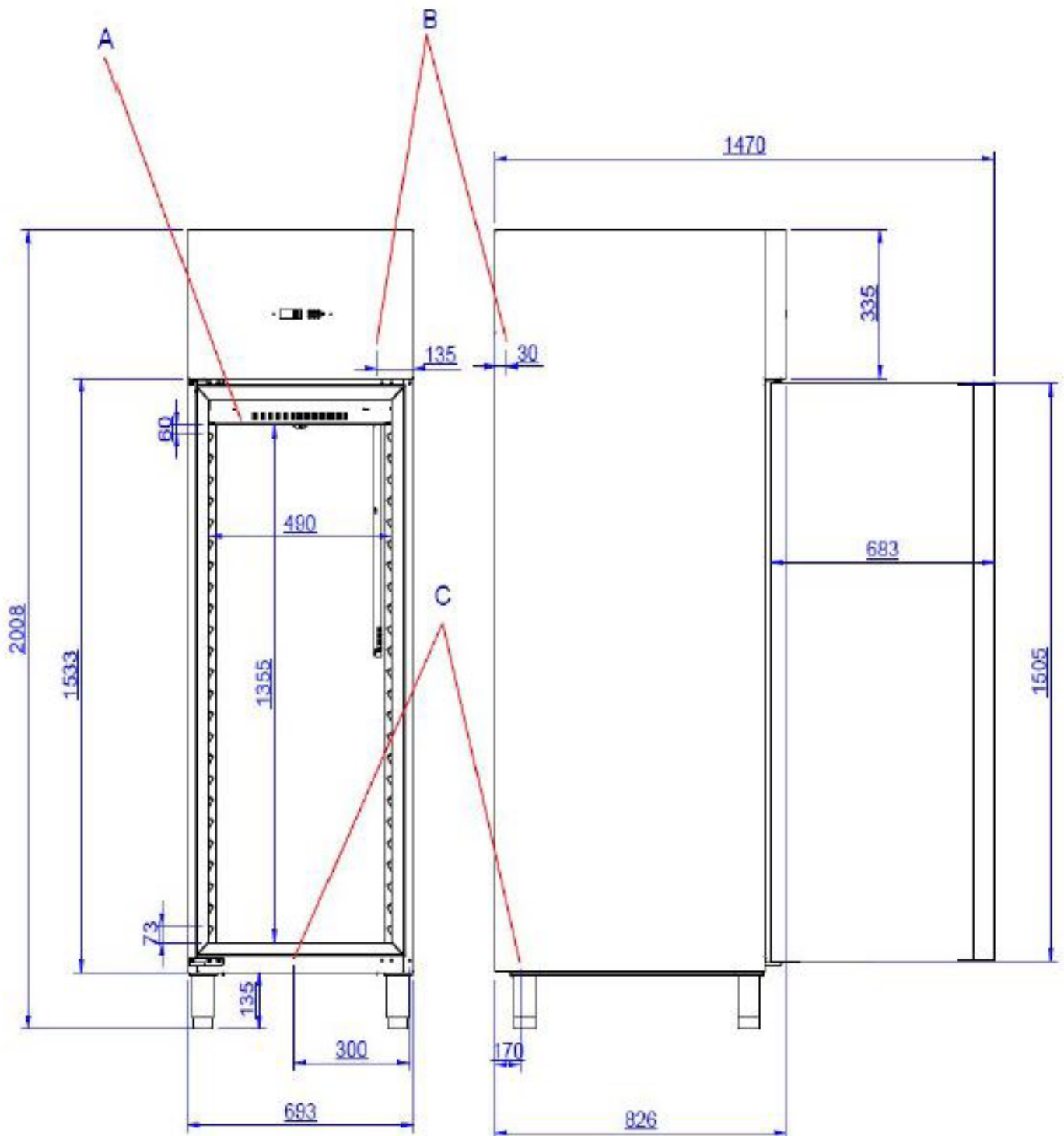
Technical drawing

Freezing cabinet 700 l GN 2/1, stainless steel

Model

SAP Code

00006115



# Technical data sheet



## Product benefits

### Freezing cabinet 700 l GN 2/1, stainless steel

Model

SAP Code

00006115

1

#### Insulation 60mm

minimal heat loss

- saving electricity
- less wear and tear on the compressor due to less frequent switching

2

#### Two-sided opening

possibility to change the opening from the right to the left side

- greater variability of use

3

#### All-stainless design

outer shell

only stainless steel intended for food contact is used

good maintenance

zero contamination

resists even weaker acids

- long service life and high durability

4

#### Automatic defrosting

maintenance-free operation

continuous defrosting

- zero requirement for frost control by the operator

5

#### Height adjustable feet

maintenance-free operation

continuous defrosting

- precise positioning of the fridge in uneven floors, ensures correct operation of the unit thanks to the balance

# Technical data sheet



## Technical parameters

### Freezing cabinet 700 l GN 2/1, stainless steel

**Model**

**SAP Code**

00006115

**1. SAP Code:**

00006115

**2. Net Width [mm]:**

693

**3. Net Depth [mm]:**

826

**4. Net Height [mm]:**

2008

**5. Net Weight [kg]:**

118.00

**6. Gross Width [mm]:**

700

**7. Gross depth [mm]:**

850

**8. Gross Height [mm]:**

2150

**9. Gross Weight [kg]:**

149.00

**10. Device type:**

Electric unit

**11. Power electric [kW]:**

0.879

**12. Loading:**

230 V / 1N - 50 Hz

**13. Energy class:**

D

**14. Refrigerant:**

R290

**15. Cooling type:**

Dinamic

**16. Material:**

Stainless steel

**17. Min ambient temperature [°C]:**

10

**18. Max ambient temperature [°C]:**

43

**19. Additional information:**

The shelves are removable and adjustable

**20. Device properties 2:**

Freezing

**21. GN / EN size in device:**

GN 2/1

**22. Number of GN / EN:**

3

**23. Chamber volume [l]:**

700

**24. Gross Volume [m3]:**

1.279

**25. Net Volume [m3]:**

1.149

**26. Adjustable feet:**

Yes

**27. Insulation thickness [mm]:**

60

**28. Opening of device:**

Hinges on the left

# Technical data sheet



Technical parameters

Freezing cabinet 700 l GN 2/1, stainless steel

Model

SAP Code

00006115

**29. Number of doors:**

1

**30. Unit:**

Yes

**31. Control type:**

Digital

**32. Annual energy consumption [kWh]:**

2435

**33. Minimum device temperature [°C]:**

-18

**34. Maximum device temperature [°C]:**

-22

**35. Automatic defrost:**

Yes

**36. Thaving cycle:**

Yes

**37. Number of grids:**

3

**38. Climate class:**

4

**39. Cross-section of conductors CU [mm<sup>2</sup>]:**

0,5

- Výkon (kW): 2,4-3,3 (230 V)